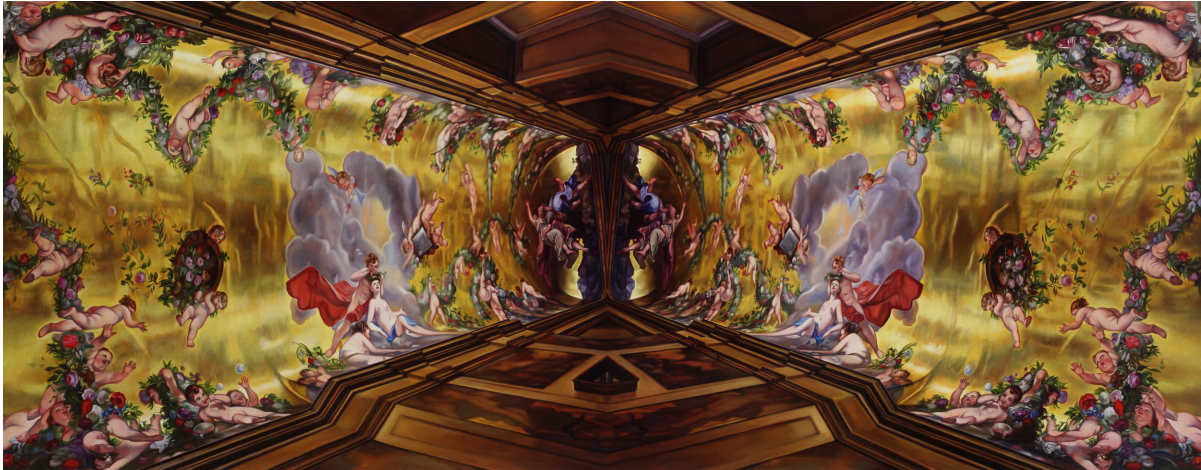


**PRESS RELEASE For Immediate Release**

media inquiries please contact Cris Worley

214.745.1415, [cris@crisworley.com](mailto:cris@crisworley.com)

**cris worley**  
FINE ARTS



*Holy Bravado*, 2013, oil on linen over panel, 36 x 92 inches

**Patti Oleon – *Parallel Spaces***

Opening Reception: Saturday, November 22, 6 – 8pm

Exhibition dates: November 22, 2014 – January 3, 2014

Cris Worley Fine Arts is committed to introducing strong voices in contemporary art to Dallas and to the greater landscape of the arts in Texas. We are proud to present our first solo exhibition of conceptual realist paintings by San Francisco-based artist **Patti Oleon**. *Parallel Spaces* opens with an artist's reception Saturday, November 22 from 6–8pm and will run through January 3, 2014. The artist will be in attendance from San Francisco, California.

At a time when contemporary art's focus strongly favors concept, **Patti Oleon's** realist paintings marry the conceptual with an undeniable technical prowess. Light serves as the entry point into **Oleon's** un-peopled places. Each painting first begins as a digital photo taken by the artist which is then transformed and reworked on the computer. Some images are mirrored, while others, more subtly play out as ghostly echoes of shadow and form. These sometimes haunting, always powerful, images are then executed in refined and expert brushwork in oil on panel. What remains is a fictitious reality of a once-inhabited space that engages the viewer to question reality over artifice.

**Patti Oleon** (b. 1954, St. Louis) received both her BA and MFA from UCLA from which she graduated summa cum laude. Oleon has been the recipient of numerous awards and grants, including a Guggenheim Fellowship, the Pollock-Krasner Foundation Grant (twice), the Adolph and Esther Gottlieb Foundation Grant, Fulbright/DAAD Fellowship, Ford Foundation Grant, and an Ingram Merrill Foundation Grant. She has exhibited at institutions such as the Santa Monica Museum of Art, the Zimmer Children's Museum/Jewish Federation of Los Angeles, the San Jose Institute of Contemporary Art, and the Los Angeles Institute of Contemporary Art.

Cris Worley Fine Arts is located at: 1415 Slocum St, # 104, Dallas, TX 75207. Our contact information is - Telephone: 214.745.1415, Email: [cris@crisworley.com](mailto:cris@crisworley.com), Website: [www.crisworley.com](http://www.crisworley.com). Gallery Hours are Wednesday – Saturday from 11am – 5pm and by appointment.