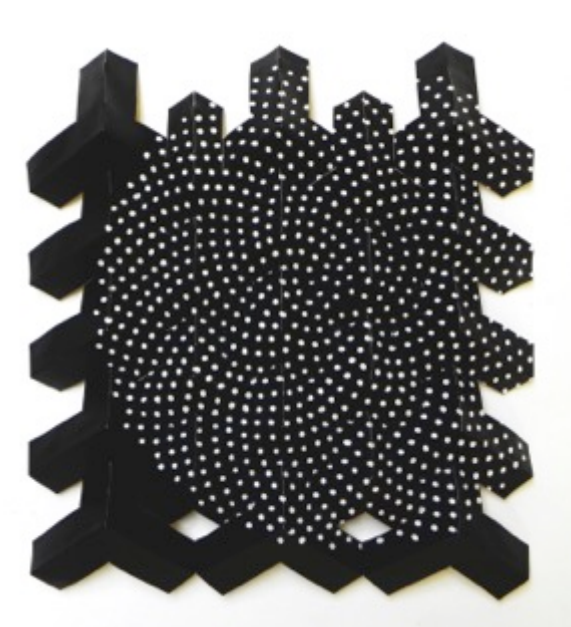


**PRESS RELEASE For Immediate Release**

media inquiries please contact Cris Worley

214.745.1415, [cris@crisworley.com](mailto:cris@crisworley.com) (see gallery address below)



## Rusty Scruby – *Firesticks*

*Opening Reception:*

Saturday, February 20, 2016, 6-8 pm

*Exhibition dates:*

February 20 – March 26, 2016

*Location:*

Cris Worley Fine Arts, 1845 Levee St. #110,  
Dallas, TX 75207

*Gallery Hours:*

Tuesday – Saturday from 11am – 5pm,  
and by appointment.

Left: Rusty Scruby, *Counting*, 2015,  
acrylic on paper construction, 12.5 x 11.5 x 2 inches

Cris Worley Fine Arts is pleased to present *Firesticks*, a solo exhibition by gallery artist, **Rusty Scruby**. The exhibition will open with an artist's reception on Saturday, February 20<sup>th</sup> from 6 – 8 pm, and will be on view through March 26, 2016.

This latest body of work marks a significant shift in the artist's personal life. With the death of a close friend and the subsequent move into a new studio, *Firesticks* explores the artist's journey through a new physical and emotional terrain. For over ten years, **Scruby** lived surrounded by concrete, void of any real natural landscape, and his new environment presents the opportunity to grow and maintain a garden. Through the careful watch of each plant, **Scruby** is confronted by the continual cycle of birth, death and re-birth so closely related to his recent experiences.

Likewise, the ever-mathematical mind of **Rusty Scruby** finds infinite numerical sequences in his newfound relationship with nature. At the center of the work lies a unique and complex understanding of mathematical theory, ratios, and pattern. Concurrently, the artist's obsession with music composition plays a significant role. In the process of moving, **Scruby** acquires a new and much needed piano to accompany his studio practice; he begins to play new sheet music that he had not before, particularly the simplified structures of Philip Glass' *Etudes*. All of these elements: the cycle of life, the simplicity of nature's perfect geometry, and the challenge of one man's adaptation to unexpected change, converge in the work of *Firesticks*.

**Rusty Scruby** has exhibited both nationally and abroad including exhibitions in Miami, Houston, Dallas, Los Angeles, Santa Fe, Philadelphia, Chicago and Seoul, South Korea. In 2010, he received a National Endowment for the Arts grant for his solo exhibition presented by Art Museum of Southeast Texas in Beaumont. His work is in major public collections including: the Cosmopolitan of Las Vegas, Stephen Pyles Restaurant, Microsoft Corporation, Capital One, Lamar University, the Art Museum of Southeast Texas, and The Museum of Fine Arts, Houston.

**cris worley**

FINE ARTS

1845 Levee Street, Suite 110  
Dallas, Texas 75207

t: 214.745.1415 | f: 214.745.1417  
[crisworley.com](http://crisworley.com)