



PRESS RELEASE

FOR IMMEDIATE RELEASE

April 4, 2018

Contact: Cris Worley, cris@crisworley.com
Cris Worley Fine Arts
1845 Levee St. #110
Dallas, TX 75207
214-745-1415

Exhibition Title: *Robert Lansden : As Within, So Without*

Exhibition Dates: May 19 - June 23, 2018

Opening Reception: May 19th, from 5:00 to 8:00 p.m.

Cris Worley Fine Arts is pleased to announce our second solo exhibition with Robert Lansden. *As Within, So Without*, will open with an artist's reception on Saturday, May 19th from 5 – 8 pm. The exhibition will feature eleven new works on paper and will be on view through June 23.

Over the course of his career, Robert Lansden has quietly engaged in a minimalist approach to the question of new media in contemporary art through his meticulous drawings rendering data graphed from spontaneous algorithms. His work is characterized by a resemblance to computer-generated works on paper that give the illusion of warps in the fabric of space-time. Viewers are fascinated to discover that each mark is not artificial, but created solely by the hand of the artist in ink, gouache, or watercolor.

In this exhibition, Lansden expands his exploration of generative web-like patterns to include images of highly ordered architectural systems. Drawings like *Arranging Time #2* (2018), and *Surrender* (2018), adhere to strict rectilinear borders that establish visible axis of symmetry, and retain the highly disciplined quality characteristic of Lansden's body of work. These new works evoke the layered decorative stonework in powerful geometric design programs found in the Gothic cathedrals of Western Europe, step-wells in the Indian subcontinent, and pyramids around the globe. The careful contemplative process necessary to create these tactile compositions can pull viewers into an almost trance-like state. Lansden's deliberate approach to the medium of drawing maintains a strong connection to the legacy of conceptual artists like Agnes Martin and Sol Lewitt.

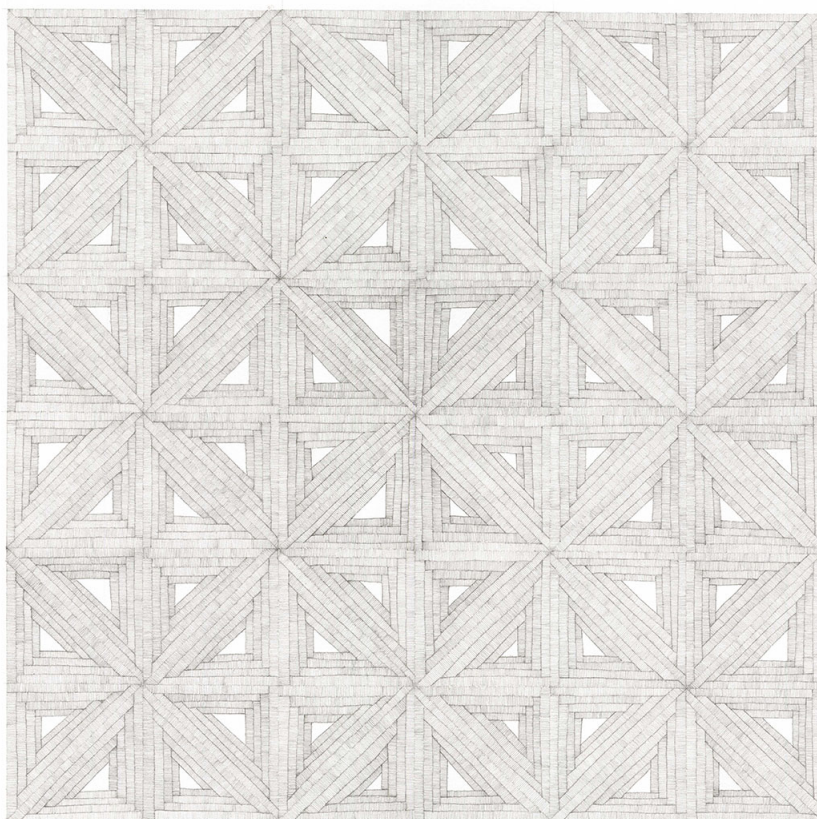
cris worley

FINE ARTS

214/745-1415 | 1845 LEVEE STREET, SUITE 110 DALLAS, TEXAS 75207 | CRISWORLEY.COM

Robert Lansden lives and works in Norwalk, CT. He received his Bachelor of Fine Art from the Atlanta College of Art in 1989, a Master of Library Science from Palmer School of Library & Information Science in New York in 1999, and a Master of Fine Art from Tulane University in 2005. His work has been widely exhibited in galleries, universities, and museums including the Mobile Museum of Art in Mobile (AL), Nebraska Wesleyan University’s Elder Gallery in Lincoln (NE), Nexus Center for Contemporary Art in Atlanta (GA), University of New Orleans’s Ogden Museum of Southern Art (LA), and Kentler International Drawing Space in Brooklyn (NY).

ROBERT LANSDEN IMAGE (also attached separately to email):



Robert Lansden, *Surrender #2* (detail), 2017, graphite on paper, 30h x 22w in