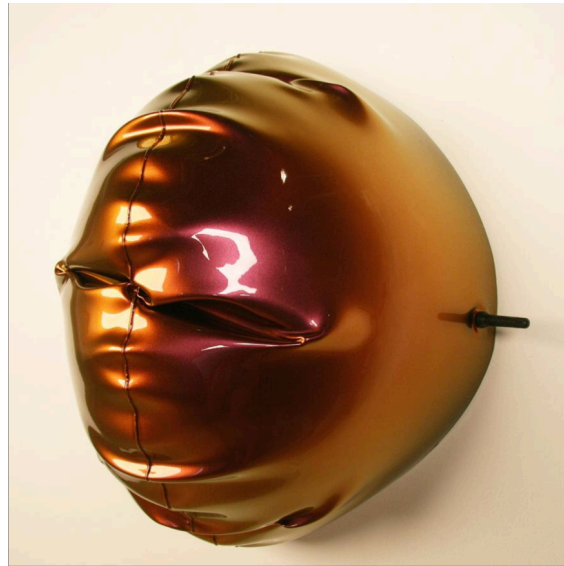


CRITIC'S PICKS: HOUSTON, William Cannings'



"TROPHY II," 2016, William Cannings, Inflated Steel, KAMELEON AUTOMATIVE PAINT, RUBBER VALVE
24"X22"X13" PHOTO: COURTESY Anya Tish Gallery

William Cannings' sculptures are immensely popular, due to their visual appeal, which is at odds with the materials he uses to create them. Using materials such as aluminum and steel, he creates flat organic shapes and then blows them up with compressed air, creating bubbles and pillows of metal. These surfaces are a key aspect of the work, and he finishes them with a seductive, shiny materials. It's always a shock to touch one of Canning's sculptures, because they look lighter than air. For this show, the artist plans to suspend a group of small shapes from the ceiling using invisible monofilament; he calls the work *Swarm*. Below will be large floor pieces finished with iridescent "Kameleon" paint, which changes colors as one moves past them. On the walls will be a series of abstracted masks finished in glossy, sparkly black. Inspired by Italian and British racing cars, and the car culture in general, the English-born artist experimented with automotive paint, hand-rubbed lacquers, powder coatings, graphite, and plastic and vinyl pigments. As sculpture-area coordinator at Texas Tech University, Cannings is in charge of metal fabrications, which allows him to experiment with various materials and techniques—all of which should be on ample display in his new show. "Luster Cluster" goes on view at Ana Tish Gallery from September 9 to October 8, 2016.